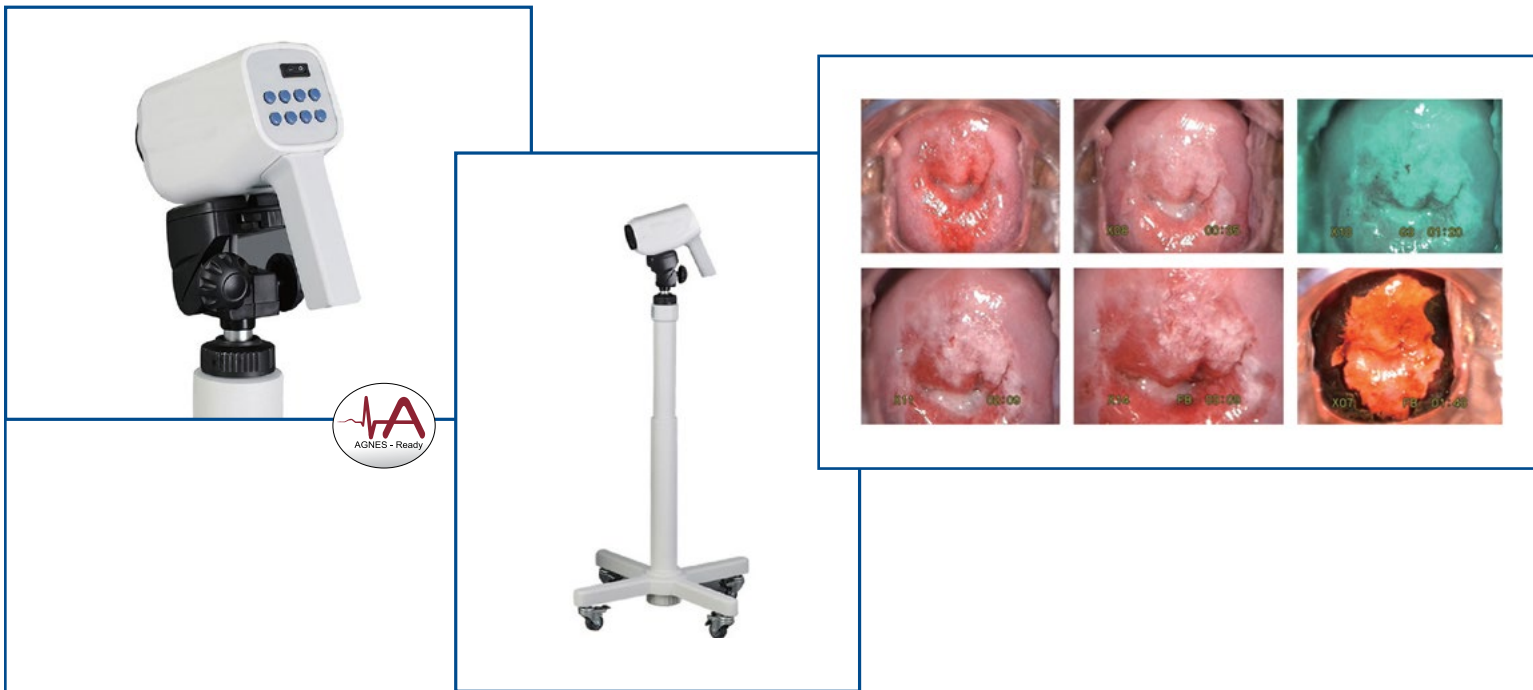


## Digital Video Colposcope

AMD-2485

The *Digital Video Colposcope* system is a powerful high definition camera and imaging module used for clinical examinations of the cervix, vulva and vagina. The SONY high definition CCD imaging module and super bright LED light source, provide high quality images for clinicians to see pathology changes. This video colposcope is different from traditional optical colposcopes because instead of viewing through an eyepiece, it uses a high-resolution imaging technology that displays the captured images on a viewing monitor.



### Product Features:

- High-resolution color CCD, circular LED group light source, and control circuit all integrate into one handheld camera.
- Button controls provide convenience for operations such as zoom in/out, focus, freeze, green filter, and timing and magnification factor display.
- Three-grade electronic green filter provides exceptional pathology visualization.
- Bright LED light source reproduces the true color of tissue.
- 40x magnification (36x optical) and 52° field of view for close up viewing of possible lesions or abnormalities.

## Technical Specifications:

### Components:

- Camera
- Image processing unit
- Vertical stand

### Dimension (camera & stand):

- when stand is contracted: 500 mm (l) x 500 mm (w) x 920 mm (h)
- when stand is extended: 500 mm (l) x 500 mm (w) x 1120 mm (h)

### Weight: 8.81 lbs (4 kg)

### Camera Specifications:

- 1/4" SONY Exview HAD CCD imaging module
- Fast auto focus
- Magnification: 1 - 40x
- Optical magnification: 1 - 36x
- Circular LED group light source
- 3 grade green filter function
- S-Video output and USB 2.0 with AMD provided adapter
- Image freeze control
- Working distance: 200 - 300mm
- Field-of-View: 52° at 1X
- Depth of View: 5mm - 120mm
- Magnification and acetic acid reaction time display
- Multifunction board (direct control of magnification, focus, freeze and green filter)

### Vertical Stand Specifications:

- International standard CCD interface
- Maximum height: ≤900 mm
- Adjustable: ≥150mm
- (4 or 5) 360° swivel leg casters with brakes

**Image Processing Unit:** includes the power supply and the image processing module to power the camera and convert analog signals to digital signals so they can be output onto a monitor or to a computer device.

### Viewing Monitor Minimum Requirements

- Type: Color Display
- Size: ≥15"
- Horizontal Definition: ≥550TVL
- Refresh Rate: ≥60Hz
- Brightness: ≥250cd/m<sup>2</sup>
- Viewing Angle: ≥150°
- Contrast: ≥400:1

### Power Supply

- Input Voltage: 100-240V, 50/60Hz±1Hz
- Input Power: 100VA

### Environmental Specifications:

*(This product should not be placed under direct sun light)*

### Operation:

- Temperature: 41°F - 104°F (5° - 40°)
- Relative Humidity: ≤80%
- Atmospheric pressure: 70.0kPa - 106.0kPa

### Storage:

- Temperature: -4°F - 131°F (-20° - +55°)
- Relative Humidity: ≤95%
- Atmospheric pressure: 50.0kPa - 106.0kPa



AMD Global Telemedicine  
321 Billerica Road  
Chelmsford, MA 01824

Toll-Free: 1-866-449-8210  
info@amdtelemedicine.com  
[www.amdtelemedicine.com](http://www.amdtelemedicine.com)